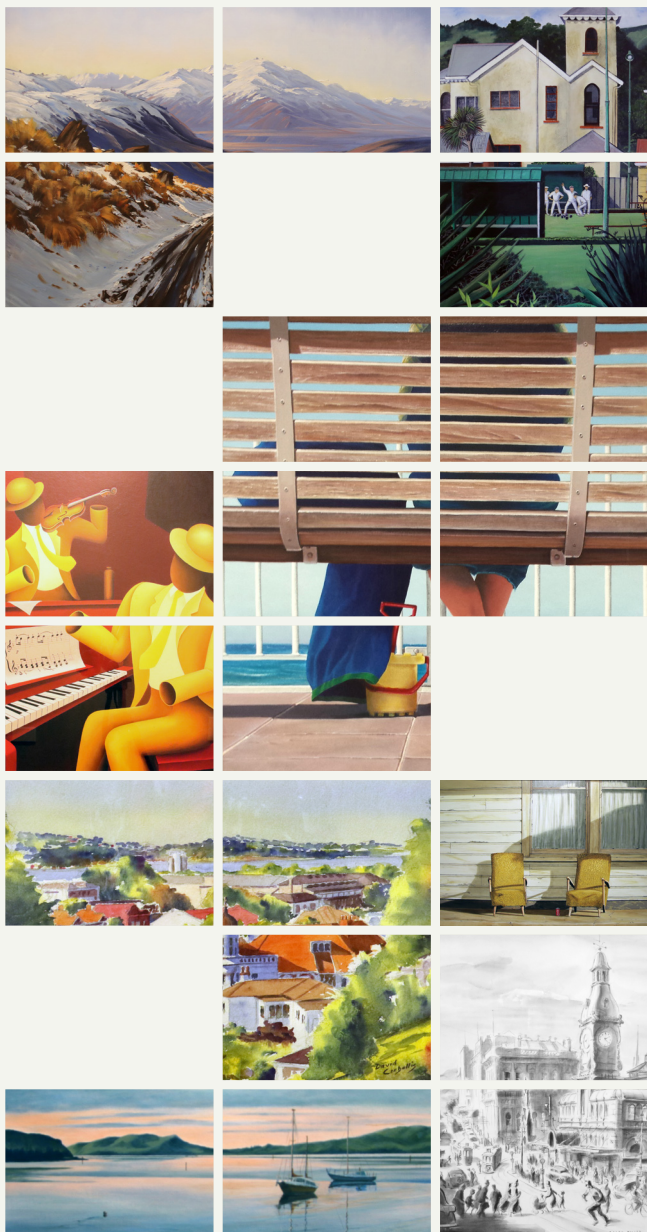


## PAST ART AWARDS WINNERS



**FOR MORE DETAILS  
AND THE ENTRY FORM VISIT  
[WWW.HOPEANDSONS.CO.NZ](http://WWW.HOPEANDSONS.CO.NZ)**

## 2026 QUICK CHECK CALENDAR

### FRIDAY 30TH JANUARY 11.59PM

Entry fee, form and digital image of completed work due to Otago Art Society.

### MONDAY 9TH FEBRUARY

Preliminary selection of digital images confirmed & entrants notified.

### WEDNESDAY 25TH FEBRUARY

Last day for couriered entries to Otago Art Society by 4pm.

### SATURDAY 28TH FEBRUARY & SUNDAY 1ST MARCH

Local entries to be delivered between 10am - 1pm.

### FRIDAY 13TH MARCH

Awards announced at private opening night at 6pm, exhibitors and Otago Art Society members are invited.

### SATURDAY 14TH MARCH

Exhibition open to the public. 10am - 4pm daily.

### SATURDAY 11TH APRIL

Final exhibition day.

### SUNDAY 12TH APRIL

Exhibition closed. Collection of unsold work 10am - 1pm.

### MONDAY 13TH APRIL

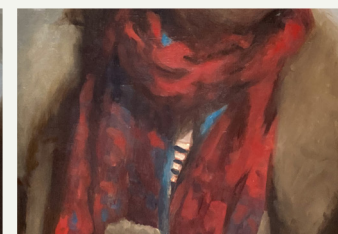
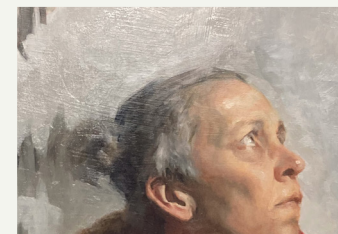
People's Choice Award announced and published on the Otago Art Society - OAS' Facebook page.

### SUNDAY 19TH APRIL

Works not collected by 4pm on this date will become Otago Art Society property to be disposed of at its discretion.

# HOPE AND SONS Art Awards 2026

**Theme  
'OPEN'**



**Hosted By:  
Otago Art Society,  
Dunedin Railway  
Station**

**ENTRIES CLOSE**  
30 JANUARY 2026

**EXHIBITION OPEN**  
14 MARCH 2026 - 11 APRIL 2026

Open Daily 10am - 4pm

HOPE & SONS  
FUNERAL DIRECTORS

150  
YEARS  
1876-2026

oas

# HOPE AND SONS ART AWARDS | TERMS OF ENTRY

## THEME

Open

## MEDIUM

Works must be 2D and 1 of 1.  
No photographs or digital work.

## PRIZES

- 1ST
- 2ND
- 3RD
- PEOPLE'S CHOICE
- YOUNG ARTIST

\$5000  
\$3000  
\$1000  
\$500  
\$500

The People's Choice Award will be decided by popular vote which will run throughout the exhibition and announced on the OtagoArtSociety-OAS Facebook page at the conclusion of the exhibition. Entrants 25 years old or younger on 13th March 2026 are also eligible for the Young Artist Award. Please include your date of birth to be considered for this Award.

## ENTRY FORM, DIGITAL IMAGE AND FEE PAYMENT

To be eligible for selection, a completed entry form, named digital image of work and non-refundable entry fee of \$35 per entry, must be received no later than Friday 30th January 2026. NO LATE ENTRIES WILL BE ACCEPTED.

Read 'IMPORTANT INFORMATION' section for naming image and entry fee payment. Entry form must be FULLY completed. Incomplete details and understating size information on entry form risks works being eliminated at receiving stage.

## DO NOT SEND ARTWORK UNTIL ADVISED OF SELECTION

You will be notified of Selection or Non-Selection by Monday 9th February 2026. If you are selected you must deliver the work by the dates listed below.

## DELIVERY OF SELECTED ARTWORK TO:

Otago Art Society  
First Floor, Dunedin Railway Station  
22 Anzac Avenue, Dunedin, 9016

## - COURIERED ARTWORKS

Must be received no later than 4pm on Wednesday 25th February 2026. Inward and outward freight will be the responsibility of the artist. Pre-paid return freight tickets and a return address label for unsold artwork must be included with artwork. Courier tickets will be returned if works are sold.

## - LOCAL ARTWORKS

Must be delivered on Saturday 28th February 2026 or Sunday 1st March 2026 between 10am-1pm.

## DO NOT SEND ARTWORK UNTIL ADVISED OF SELECTION

WORKS THAT DO NOT MEET THE ENTRY CONDITIONS OR THE JUDGES' STANDARD ONCE RECEIVED WILL NOT BE EXHIBITED.

## VENUES & DATES

Entries which are selected will be exhibited at the Otago Art Society, Dunedin Railway Station. Otago Art Society members and exhibiting Artists are invited to attend the Awards evening on Friday 13th March 2026 at 6pm. The exhibition will open to the public on Saturday 14th March 2026 and close on Saturday 11th April 2026.

## CONDITIONS OF ENTRY

- Open to all Otago Art Society members and any Artist residing in New Zealand.
- Artists are welcome to submit up to 2 entries in total. EACH entry must be accompanied by an entry form, image and fee.
- Works must not have been previously exhibited at the Otago Art Society, and not previously received any award.
- All works must be original and the sole work of the artist, and completed within the last 24 months.
- Works must be totally dry, suitably and professionally presented ready for display, without major assembly required.
- All works must be 2D and 1 of 1 (no ceramics, sculptures, photography or digital work) For further information, please email [otagoartsociety@xtra.co.nz](mailto:otagoartsociety@xtra.co.nz)
- All works must not exceed **1000mm** including frame on it's longest side (STRICTLY ADHERED TO), with D-Rings 75mm from the top.
- Artist's **name as for catalogue, title of work, medium, price and phone number must be attached to the work as well as on a swing label.** These details MUST match those recorded on the entry form.
- The \$35 entry fee payment per entry is non refundable.
- It is agreed that an image of the work may appear on the Otago Art Society website, social media pages, Hope and Son's social media and used for other promotional purposes. Entrants may wish to follow the Facebook page 'Otago Art Society - OAS' to see any updates.
- All artworks must be for sale. A **35% commission** will be deducted on the sale of all works. Payment for sold works will be made by the 10th working day of the month following sale date.
- PLEASE NOTE INSURANCE FOR ARTWORK IS THE ARTIST'S RESPONSIBILITY.
- Works not collected by **Sunday 19th April 2026** will be deemed to become the property of the Otago Art Society, to be disposed of at it's discretion.
- The judges' selection shall be final and no correspondence will be entered into. The Otago Art Society has no part in the selection process other than all entries adhering to the conditions of entry.

## ENQUIRIES

Email: [otagoartsociety@xtra.co.nz](mailto:otagoartsociety@xtra.co.nz)  
Phone: (03) 477 9465 (Extn. 1)

# IMPORTANT INFORMATION

## ENTRY FORM AND ARTWORK IMAGE

Complete entry form online at [hopeandsons.co.nz](https://hopeandsons.co.nz) then email a clear digital image of your artwork to:

[otagoartsociety@xtra.co.nz](mailto:otagoartsociety@xtra.co.nz) (approximately 1-4MB in size)

## ENTRY FEE PAYMENT

The non refundable \$35 entry fee payment per entry must be paid via direct debit or at the Otago Art Society shop.

**BANK TRANSFER:** Otago Art Society Inc. **02-0929-0274457-00**

**REFERENCE:** Your name      **PARTICULARS:** HOPES

**Image and Fee must be received by 11.59pm, Friday 30th January 2026**

## IMAGE FORMAT AND NAME

Please send your image as a JPG, JPEG or PNG format. Please name your artwork image as follows:

**Surname | underscore | Initial | underscore | First word of Title**

For example, Joe Bloggs is entering a work called Remain Hopeful, so he will name his file  
BLOGGS\_J\_Remain  
(.jpg or .jpeg or .png should be automatically added to the end)

Depending on your device, you may need to use a desktop computer to rename a photo. If you are using a mobile device, we recommend emailing it to your desktop computer to rename it.

## NOTE

IF YOU ARE UNABLE TO COMPLETE THE ENTRY FORM ONLINE, PLEASE CONTACT THE OTAGO ART SOCIETY AT:

Email: [otagoartsociety@xtra.co.nz](mailto:otagoartsociety@xtra.co.nz)  
Phone: (03) 477 9465 (Extn. 1)

HOPE AND SONS

# Art Awards 2026

